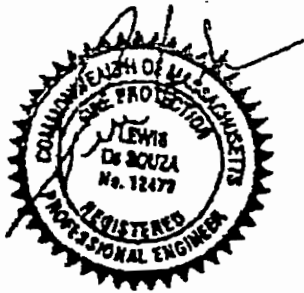


CONSTRUCTION COMPLETION NOTICE

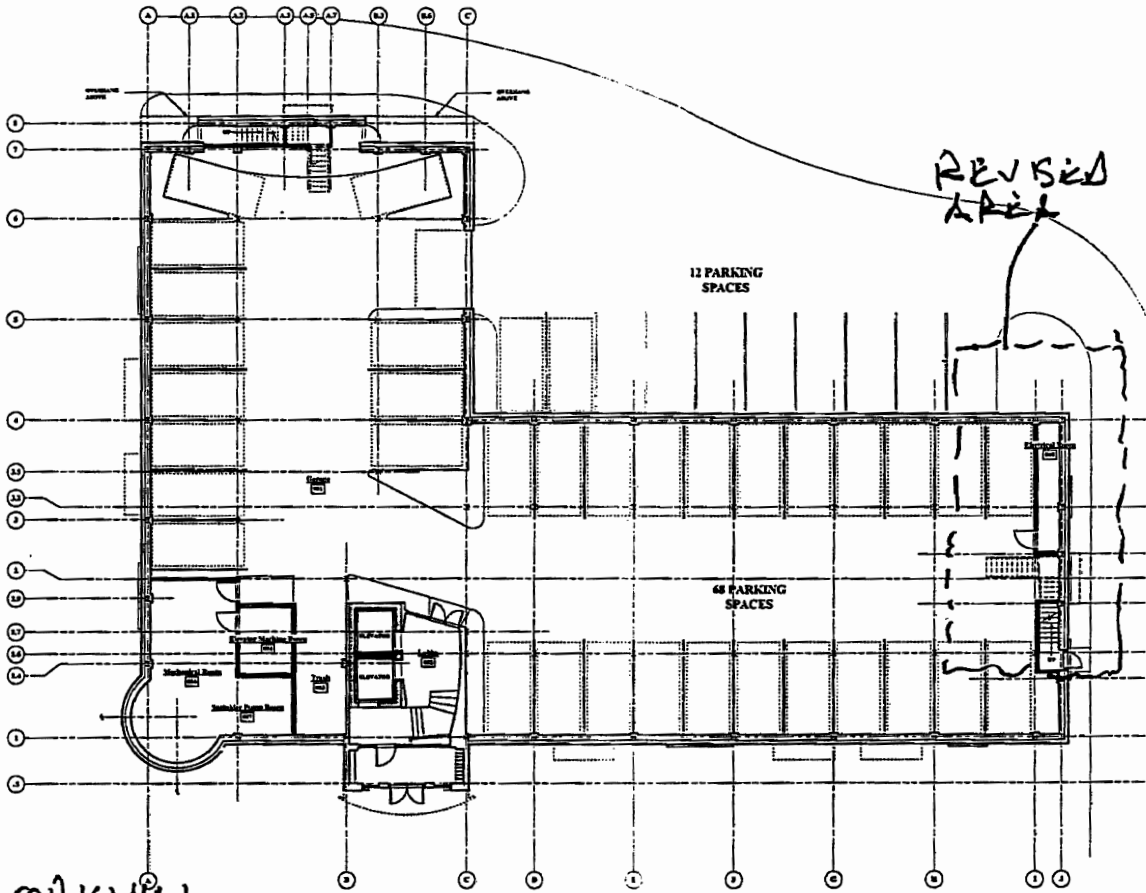
In accordance with 780 CMR, Section 116.0 of the Massachusetts State Building Code, I, LOUIS DESOUZA, being a Registered Professional Engineer certify that I or my designee have performed the necessary professional services and have been present on the construction site to determine that the work proceeded in accordance with the documents approved for the building permit, and have been responsible for the following as specified in Section 116.2.2:

1. Review, for conformance to the design concept, shop drawings, samples and other submittals, which are submitted by the contractor in accordance with the requirements of the construction documents.
2. Review and approval of the quality control procedures for all code-required controlled materials.
3. Having been present at intervals appropriate to the stage of construction to become, generally familiar with the progress and quality of the work and to determine, in general, if the work has been performed in a manner consistent with construction documents.



Louis Desouza F.P.E.
Signature & Seal

Project Title: 533 CAMBRIDGE ST, ALLSTON, MA
Project Location: 533 Cambridge St,
Allston, MA
Nature of Project: Installed new automatic wet sprinkler in
accordance with NFPA #13R and the
Massachusetts State Building Code (6th
Edition)



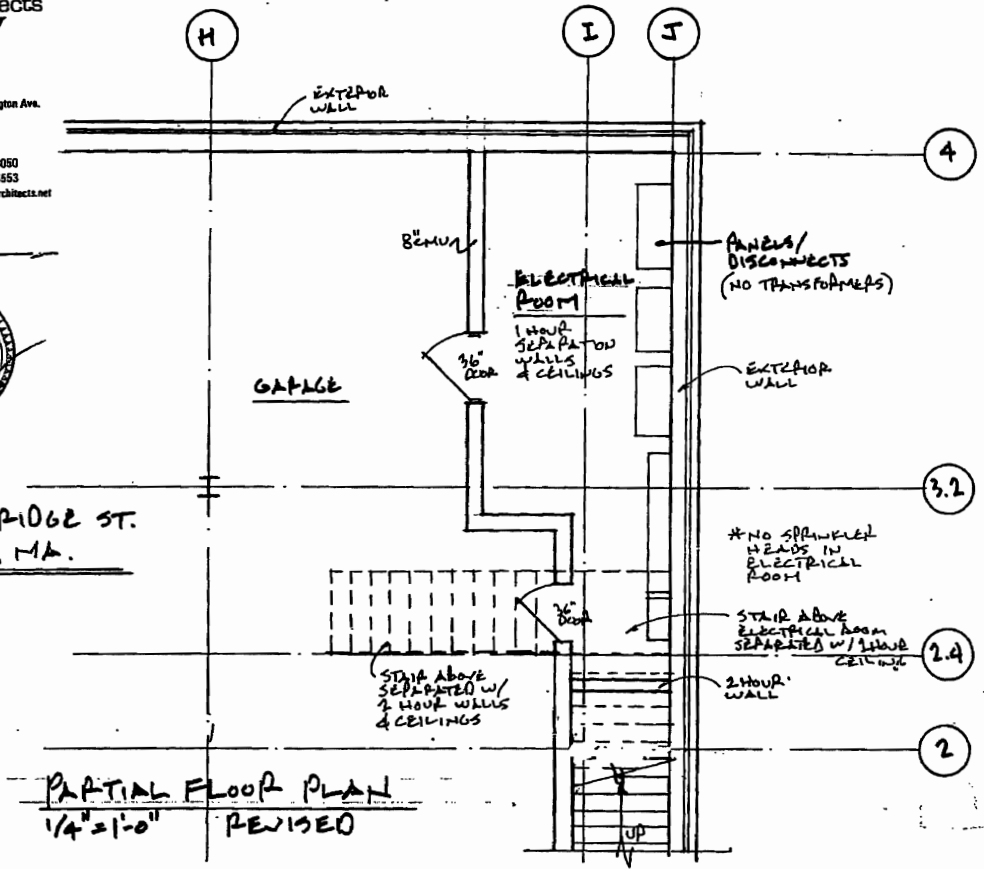
ORIGINAL
PLAN

1 Garage Floor Plan
Scale: 1/8" = 1'-0"

404 S. Huntington Ave.
Jamaica Plain
Ma. 02130
ph. 617.522.6050
fax 617.522.3553
www.mckayarchitects.net

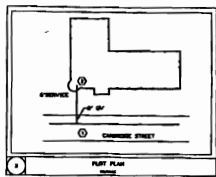


535 CAMBRIDGE ST.
ALLSTON, MA.

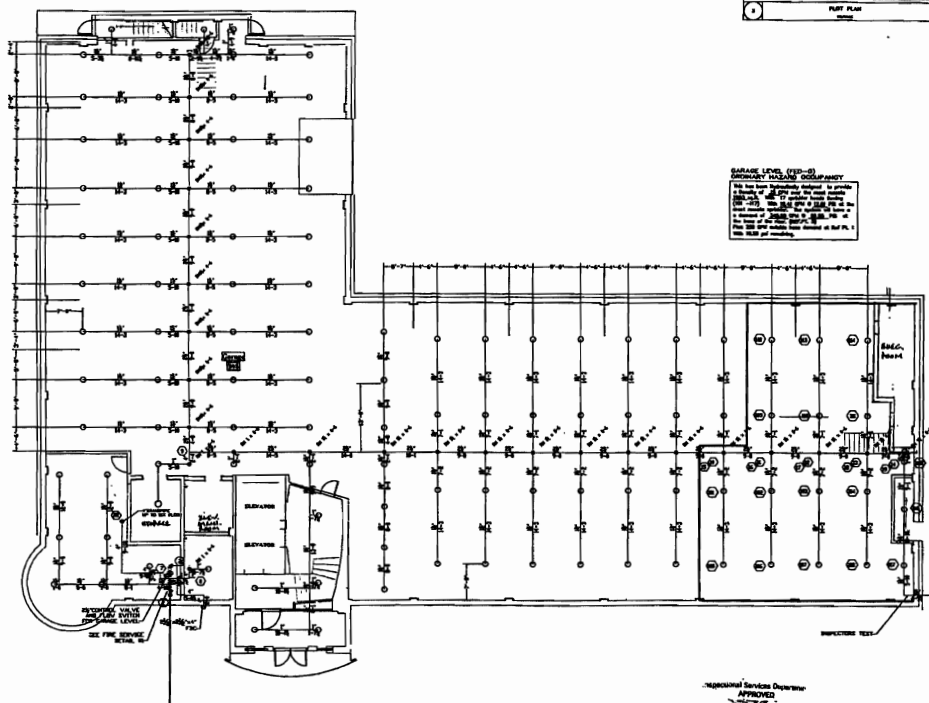


PARTIAL FLOOR PLAN
1/4" = 1'-0" REVISED

100 20
REVISED
LOWBALL



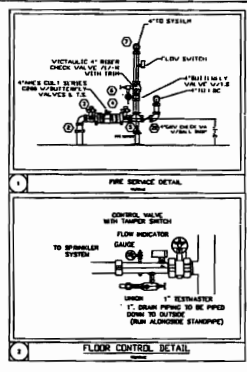
- GENERAL NOTES:**
1. MAJOR CONTRACTORS: ARCHITECT, ENGINEER, PLUMBER, ELECTRICIAN, MECHANICAL CONTRACTOR.
 2. THE FIRE PROTECTION SYSTEM SHALL BE INSTALLED IN ACCORDANCE WITH THE LATEST EDITIONS OF THE NFPA 13, 13R, 13.1, 13.2, 13.3, 13.4, 13.5, 13.6, 13.7, 13.8, 13.9, 13.10, 13.11, 13.12, 13.13, 13.14, 13.15, 13.16, 13.17, 13.18, 13.19, 13.20, 13.21, 13.22, 13.23, 13.24, 13.25, 13.26, 13.27, 13.28, 13.29, 13.30, 13.31, 13.32, 13.33, 13.34, 13.35, 13.36, 13.37, 13.38, 13.39, 13.40, 13.41, 13.42, 13.43, 13.44, 13.45, 13.46, 13.47, 13.48, 13.49, 13.50, 13.51, 13.52, 13.53, 13.54, 13.55, 13.56, 13.57, 13.58, 13.59, 13.60, 13.61, 13.62, 13.63, 13.64, 13.65, 13.66, 13.67, 13.68, 13.69, 13.70, 13.71, 13.72, 13.73, 13.74, 13.75, 13.76, 13.77, 13.78, 13.79, 13.80, 13.81, 13.82, 13.83, 13.84, 13.85, 13.86, 13.87, 13.88, 13.89, 13.90, 13.91, 13.92, 13.93, 13.94, 13.95, 13.96, 13.97, 13.98, 13.99, 14.00.
 3. THE FIRE PROTECTION SYSTEM SHALL BE INSTALLED IN ACCORDANCE WITH THE LATEST EDITIONS OF THE NFPA 13, 13R, 13.1, 13.2, 13.3, 13.4, 13.5, 13.6, 13.7, 13.8, 13.9, 13.10, 13.11, 13.12, 13.13, 13.14, 13.15, 13.16, 13.17, 13.18, 13.19, 13.20, 13.21, 13.22, 13.23, 13.24, 13.25, 13.26, 13.27, 13.28, 13.29, 13.30, 13.31, 13.32, 13.33, 13.34, 13.35, 13.36, 13.37, 13.38, 13.39, 13.40, 13.41, 13.42, 13.43, 13.44, 13.45, 13.46, 13.47, 13.48, 13.49, 13.50, 13.51, 13.52, 13.53, 13.54, 13.55, 13.56, 13.57, 13.58, 13.59, 13.60, 13.61, 13.62, 13.63, 13.64, 13.65, 13.66, 13.67, 13.68, 13.69, 13.70, 13.71, 13.72, 13.73, 13.74, 13.75, 13.76, 13.77, 13.78, 13.79, 13.80, 13.81, 13.82, 13.83, 13.84, 13.85, 13.86, 13.87, 13.88, 13.89, 13.90, 13.91, 13.92, 13.93, 13.94, 13.95, 13.96, 13.97, 13.98, 13.99, 14.00.
 4. THE FIRE PROTECTION SYSTEM SHALL BE INSTALLED IN ACCORDANCE WITH THE LATEST EDITIONS OF THE NFPA 13, 13R, 13.1, 13.2, 13.3, 13.4, 13.5, 13.6, 13.7, 13.8, 13.9, 13.10, 13.11, 13.12, 13.13, 13.14, 13.15, 13.16, 13.17, 13.18, 13.19, 13.20, 13.21, 13.22, 13.23, 13.24, 13.25, 13.26, 13.27, 13.28, 13.29, 13.30, 13.31, 13.32, 13.33, 13.34, 13.35, 13.36, 13.37, 13.38, 13.39, 13.40, 13.41, 13.42, 13.43, 13.44, 13.45, 13.46, 13.47, 13.48, 13.49, 13.50, 13.51, 13.52, 13.53, 13.54, 13.55, 13.56, 13.57, 13.58, 13.59, 13.60, 13.61, 13.62, 13.63, 13.64, 13.65, 13.66, 13.67, 13.68, 13.69, 13.70, 13.71, 13.72, 13.73, 13.74, 13.75, 13.76, 13.77, 13.78, 13.79, 13.80, 13.81, 13.82, 13.83, 13.84, 13.85, 13.86, 13.87, 13.88, 13.89, 13.90, 13.91, 13.92, 13.93, 13.94, 13.95, 13.96, 13.97, 13.98, 13.99, 14.00.



GARAGE LEVEL (100-0)
 OCCUPANCY: STORAGE
 APPROVED: [Signature]
 DATE: 2/26/06
 BY: [Signature]

GARAGE LEVEL
 Scale: 1/8" = 1'-0"

Approved Services Division
 APPROVED
 [Signature]
 DATE: 2/26/06
 BY: [Signature]
 AS BUILT
 IN ACCORDANCE WITH
 ALLSTON, MA



AS BUILT
 DATE: 2/26/06

Water Supply Information

TYPE	PRELIM.	SPR.
STANDARD	100 PSI	100 PSI
ALTERNATE	100 PSI	100 PSI
MAX. PRESS.	150 PSI	150 PSI
MIN. PRESS.	20 PSI	20 PSI
TEST PRESS.	200 PSI	200 PSI

SPRINKLER HEAD CHART

NO.	TYPE	SIZE	TEMP.	ORIF.	SPR. DATA	ORIF. SIZE	ORIF. TEMP.
0	RP	UPGRADE	57	1/2"	1/2"	1/2"	1/2"

SCALE: 1/8" = 1'-0"

PP 10f5

533 CAMBRIDGE STREET
 ALLSTON, MA

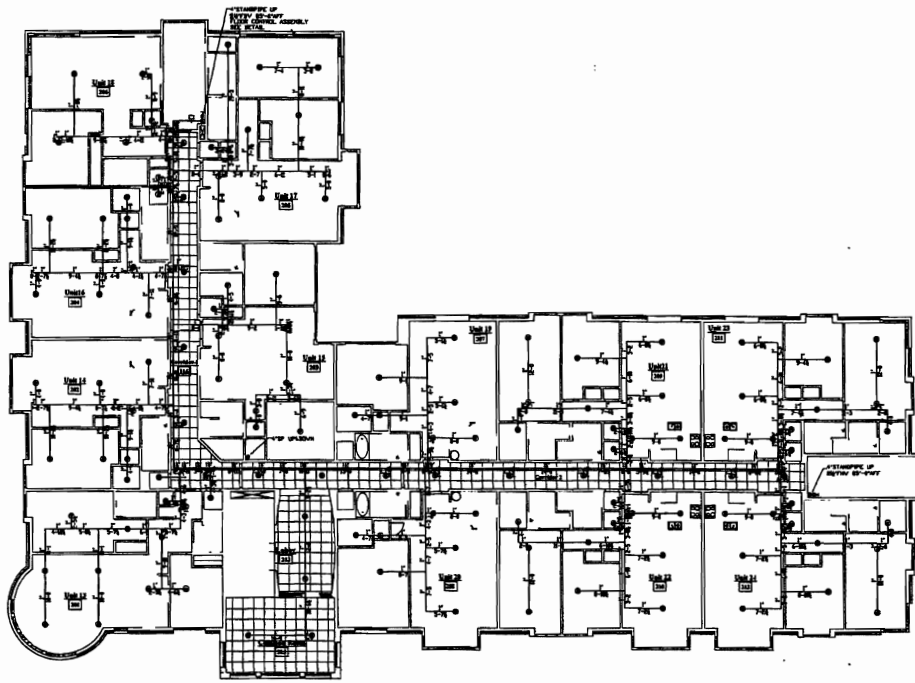
FIRE PROTECTION SYSTEM
 GARAGE LEVEL

MALE FIRE PROTECTION
 1000 STATE STREET
 BOSTON, MA 02118

DATE: 2/26/06

BY: [Signature]

APPROVED: [Signature]



SECOND Floor Plan
Scale: 1/8" = 1'-0"

AS BUILT
DATE *7/8/68*



SPRINKLER HEAD CHART

TYPE OF HEAD	CLASSIFICATION	TEMPERATURE	SIZE	SPACING	TYPE OF CONNECTION	TYPE OF GLASS	TYPE OF GLASS	TYPE OF GLASS
○	1	135	1/2"	16'	1/2"	1/2"	1/2"	1/2"
●	2	155	3/4"	16'	3/4"	3/4"	3/4"	3/4"
○	3	175	1"	16'	1"	1"	1"	1"
○	4	200	1 1/4"	16'	1 1/4"	1 1/4"	1 1/4"	1 1/4"
○	5	225	1 1/2"	16'	1 1/2"	1 1/2"	1 1/2"	1 1/2"
○	6	250	2"	16'	2"	2"	2"	2"

	PROJECT CLASSIFICATION TYPE OF PROJECT DATE	DRAWING NO. DATE	SHEET NO. DATE
	PROJECT CLASSIFICATION TYPE OF PROJECT DATE	DRAWING NO. DATE	SHEET NO. DATE
	MALE FIRE PROTECTION FIRE PROTECTION SYSTEM SECOND FLOOR	535 CAMBRIDGE STREET ALLSTON, MA	SCALE: 1/8" = 1'-0" FP 3of5

